

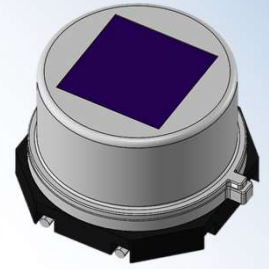
# Pyroelectric IR sensor



## SFM469-511

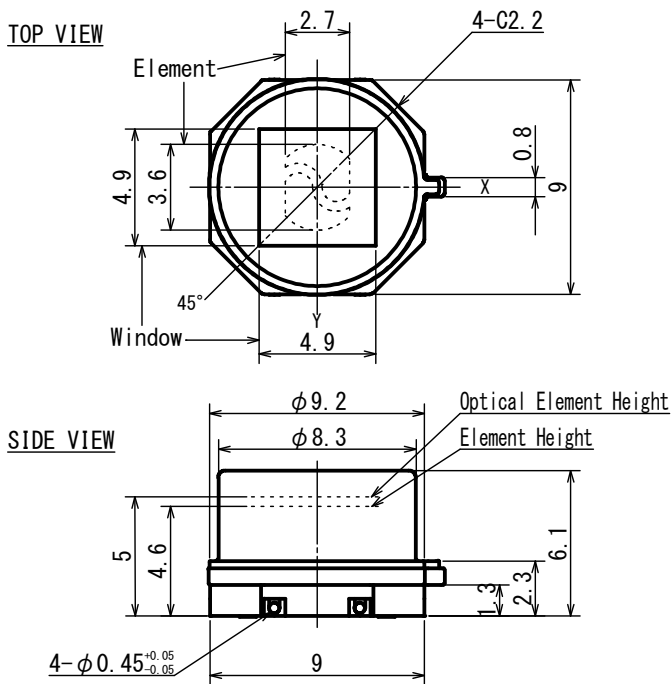
*S-Pyro*™  
*69-Pyro*™  
Applied for patent

■ Applications Security

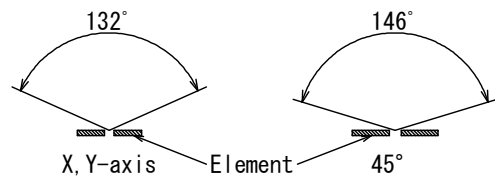


■ Feature **Omni-directional dual sensor**  
**(both ceiling mount and wall mount)**  
**Surface mount type**  
**High EMC**

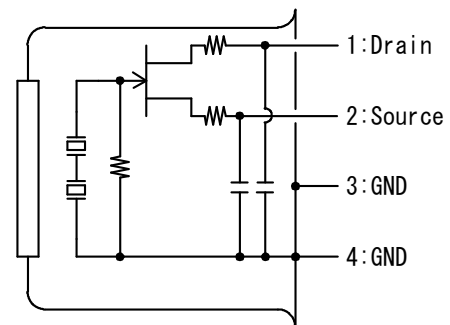
### Dimensions



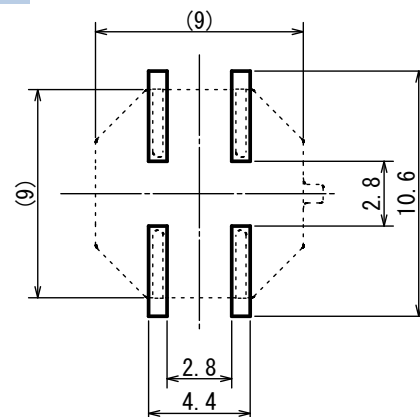
### FOV



### Circuit diagram



### Recommendation Land Size



Tolerance with no specified : +/- 0.2

### ■ Main Parameter

Parameter	Condition	Spec.			Unit
		Min.	Typ.	Max.	
Operating Voltage		1		15	V
Source Voltage	Vd=5V, Rs=470kΩ, Ta=25°C	0.3		1.4	V
Sensitivity Output	72.5dB, 1Hz, 420K	2.2	3.6		V
Noise Output	72.5dB		70	250	mV
Operating Temperature		-40		70	°C