

# NV-L Series

Wide Sensing Range, Bolt On Type

## Rated current

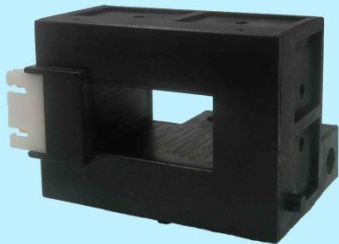
$\pm 50\text{A} \sim \pm 700\text{A}$

## Feature

- Wide Sensing Range ( $\pm 850\text{A}$ )
- Low Power Consumption
- Low Temp. Coef.

## Application

- Inverters Control
- Servo Motor Control



## Specification

Parameter \ Type Ex.	NV-L200V2S5	NV-L200V4D15
Rated Current	$\pm 200\text{A}$	
Power Supply Voltage	$+5\text{V} \pm 5\%$	$\pm 15\text{V} \pm 5\%$
Offset Voltage	$+2.5 \pm 0.04\text{V} (@25^\circ\text{C})$	$0 \pm 0.04\text{V} (@25^\circ\text{C})$
Offset Voltage Temperature Coefficient	$< \pm 2.0\text{mV}/^\circ\text{C}$	
Gain Voltage	$\pm 2.0 \pm 0.04\text{V} (@25^\circ\text{C})$	$\pm 4.0 \pm 0.04\text{V} (@25^\circ\text{C})$
Gain Voltage Temperature Coefficient	$< \pm 0.05\%/^\circ\text{C}$	
Hysteresis Voltage	$< \pm 0.010\text{V}$	
Output Linearity	$< \pm 1.0\%$	
Response Time	$< 10\mu\text{s} (di/dt = 100\text{A}/\mu\text{s})$	
Insulation Voltage	2.5kVAC (50/60Hz, 1minute)	
Insulation Resistance	500M $\Omega$ (DC500V)	
Ambient Operating Temp.	$-40^\circ\text{C} \sim +125^\circ\text{C}$ (Without Connector)	
Dimensions (W × D × H)	40.0 × 30.0 × 29.0mm : Without Connector	